



SELF-PRIMING SANITARY PUMPS

AS series



HYGIENE



BIOTECHNOLOGY



INDUSTRIAL

AS series sanitary self-priming pumps.

A close coupled design with independent shaft support and standard IEC motors. The ability of these pump to maintain a vacuum under varying suction conditions, makes them ideal for applications where the incoming liquid contains gas or air, such as vessel scavenging, the handling of foaming liquids or where the suction pipe is only partially flooded.

Prior to the first start-up, they must be initially filled with liquid; subsequently, liquid remains in the pump, allowing rapid self-priming to occur, even if the suction pipe is emptied.

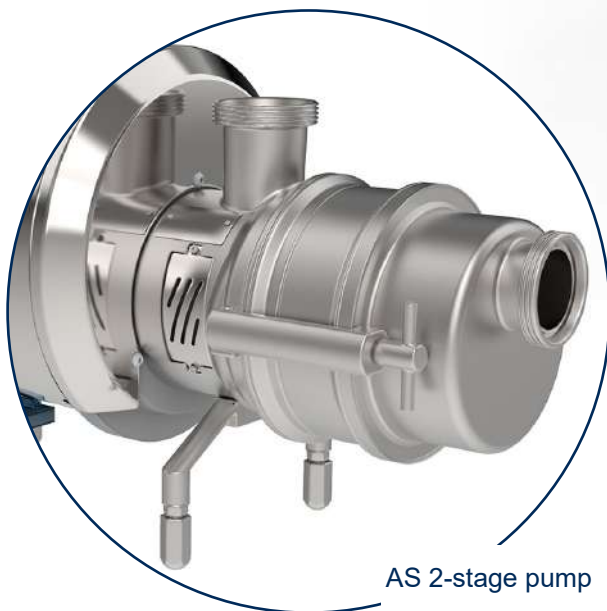
The construction materials and the quick disassembly design make the AS series particularly suitable for a wide range of applications. All CF-3M 1.4404 / AISI 316L stainless steel parts.

Stainless steel adjustable feet.

ATEX-compliant versions also available on request.



AS single-stage pump



AS 2-stage pump

Applications

AS series pumps incorporate design features and material technologies that enable them to fulfil a wide range of operational requirements within the food, beverage, dairy, pharmaceutical and chemical industries. They are especially suited for clear low viscosity fluids: CIP solutions, water, juices, wine, spirits, chemicals, in CIP scavenge/return and tank emptying duties.

Star-shaped impellers in CF-3M 1.4404 / AISI 316L stainless steel achieved with micro-casting procedure.



TECHNICAL DATA

Flow rates up to 55 m³/h
 Heads up to 45 m
 Maximum operating pressure 6 bar up to 100°C
 Temperature range -20°± +100°

Seals:

Mechanical seals with seats to EN 12756, ISO 3069 standards.

Single internal mechanical seal

Single external mechanical seal

Double flushed seal

Elastomers (FDA Regulation (EC) No. 1935/2004):

Nitrile (NBR)

Ethylene propylene (EPDM)

Fluorocarbon seal (FPM - FKM)

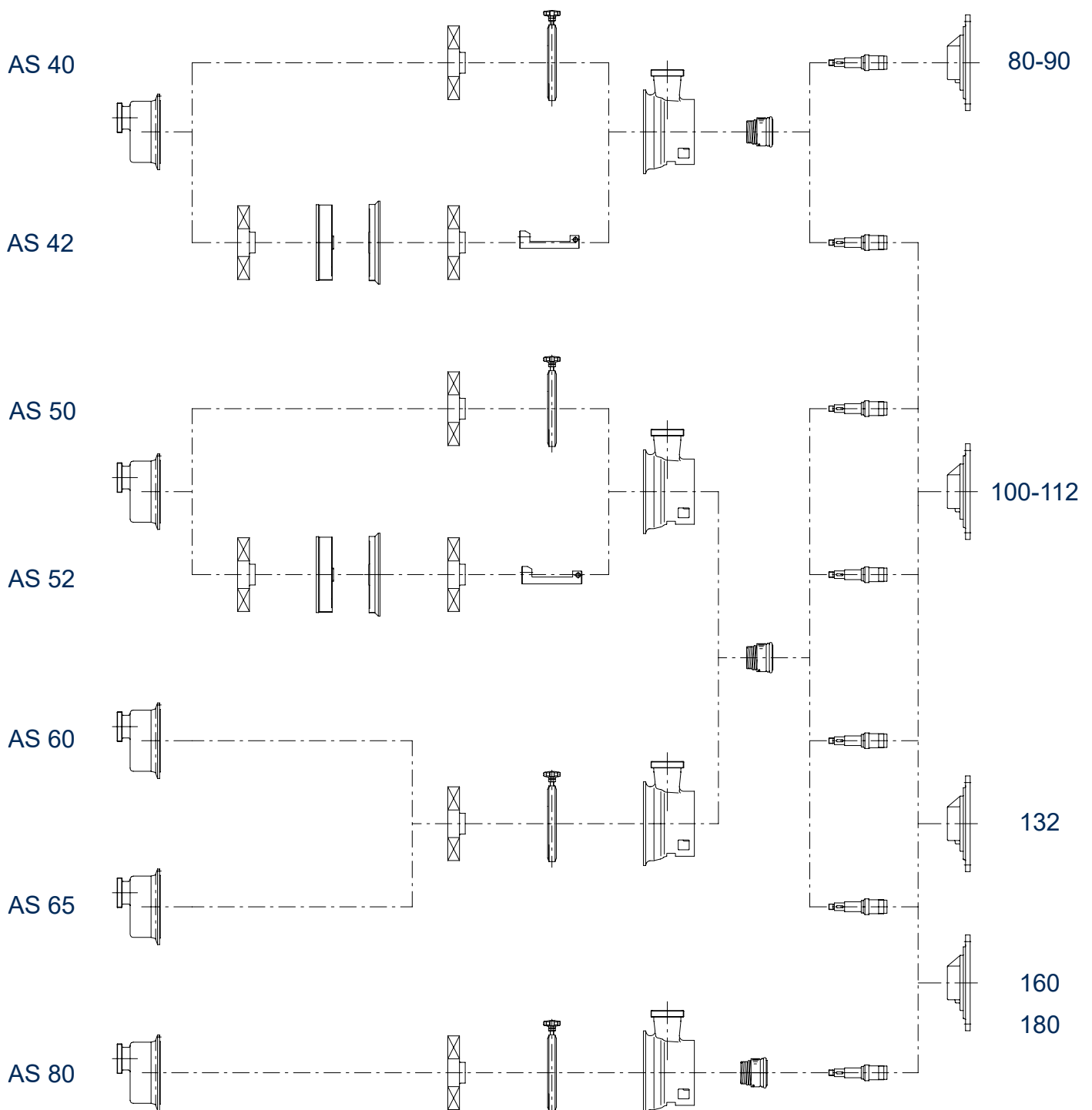
FEP

FFPM - FFKM

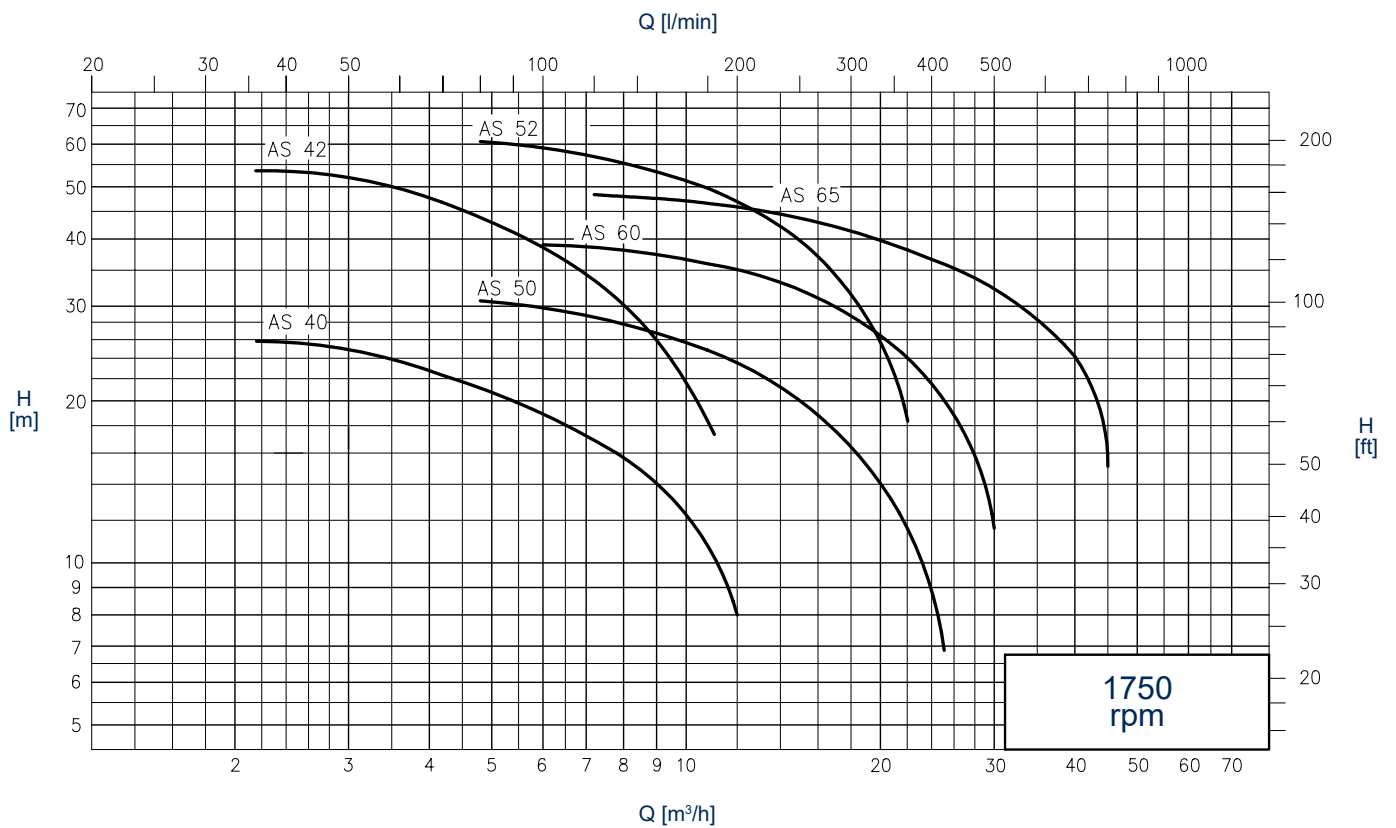
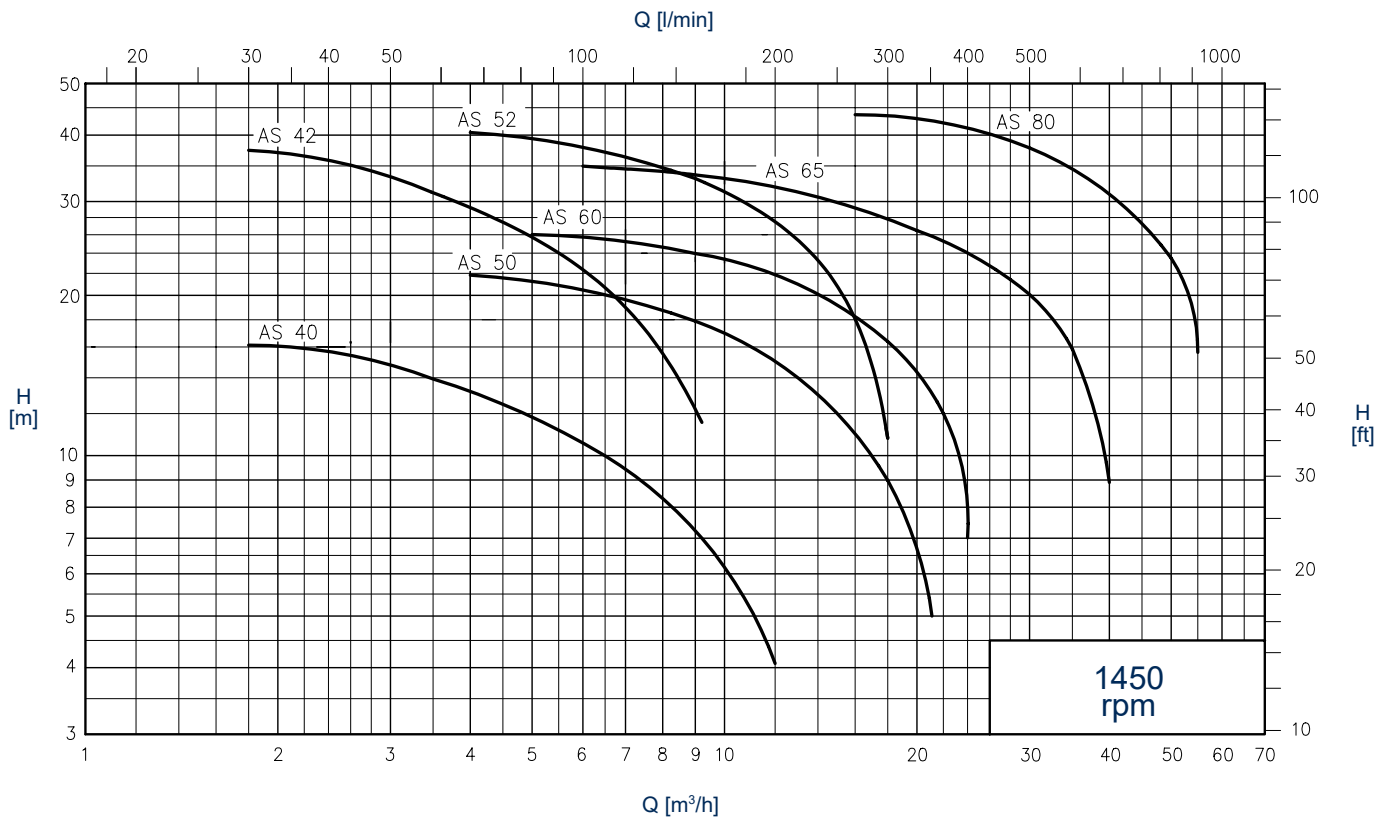
Connections:

DIN - SMS - IDF - BS / RJT - DS - CLAMP and EN1092-1 PN16 flanges to suit most international standards

A range of 4 single-stage and 2 two-stage versions.

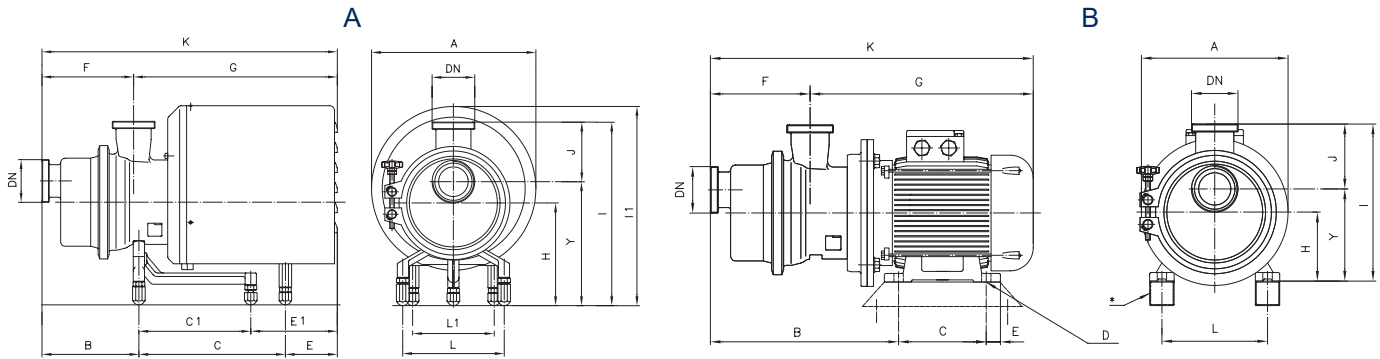


GENERAL DIAGRAMS
 (Performance applies to H₂O at 20 °C, 1013 mbar, Data not binding)



OVERALL DIMENSIONS

Dimensions not binding - DN = DIN 11851 male threaded connections, with standard IEC/EN motors

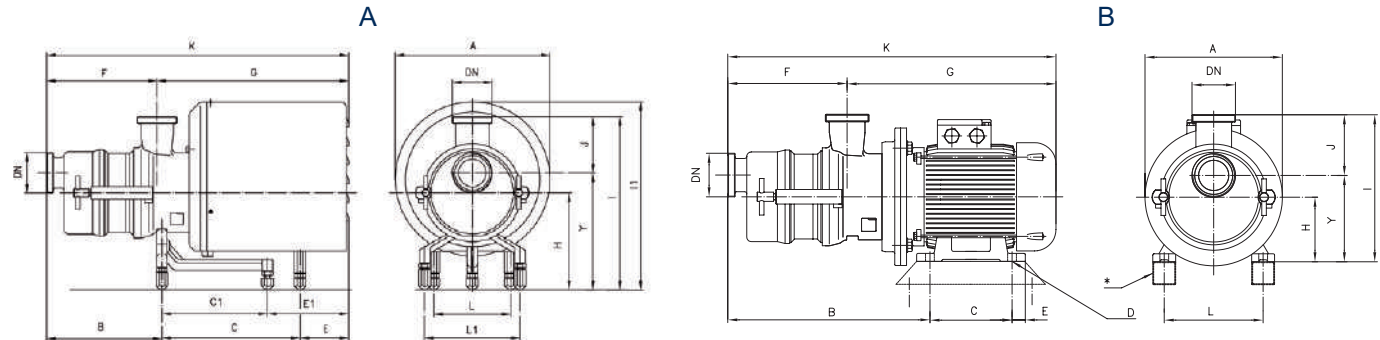


A = with shroud * Motor shims on request

| Pumps | 1450 rpm | kW | DN | A | B | C | C1 | E | E1 | F | G | K | H | J | I | I1 | Y | L | L1 |
|-------|----------|-----|-----|-----|-----|-----|-----|-----|-----|-----|------|-----|-----|-----|-----|-----|-----|-----|-----|
| AS 40 | | 1,1 | 40 | 238 | 167 | - | 190 | - | 219 | 141 | 435 | 576 | 162 | 110 | 307 | 299 | 197 | 178 | - |
| | 1,5 | 40 | 238 | 167 | - | 190 | - | 219 | 141 | 435 | 576 | 162 | 110 | 307 | 299 | 197 | 178 | - | - |
| AS 50 | 2,2 | 40 | 330 | 167 | - | 301 | - | 183 | 141 | 510 | 651 | 190 | 110 | 335 | 395 | 225 | 225 | - | - |
| | 2,2 | 50 | 330 | 196 | - | 301 | - | 202 | 175 | 523 | 697 | 228 | 114 | 378 | 433 | 264 | 225 | - | - |
| AS 60 | 4 | 50 | 330 | 196 | - | 301 | - | 202 | 175 | 523 | 697 | 228 | 114 | 378 | 433 | 264 | 225 | - | - |
| | 4 | 65 | 330 | 216 | - | 301 | - | 202 | 211 | 514 | 719 | 228 | 135 | 408 | 433 | 273 | 225 | - | - |
| AS 65 | 5,5 | 65 | 370 | 216 | 267 | - | 224 | - | 211 | 557 | 762 | 228 | 135 | 408 | 450 | 273 | 225 | 180 | 180 |
| | 5,5 | 65 | 370 | 216 | 267 | - | 224 | - | 211 | 557 | 762 | 228 | 135 | 408 | 450 | 273 | 225 | 180 | 180 |
| AS 80 | 7,5 | 65 | 370 | 216 | 267 | - | 224 | - | 211 | 557 | 762 | 228 | 135 | 408 | 450 | 273 | 225 | 180 | 180 |
| | 11 | 80 | 430 | 267 | 375 | - | 347 | - | 248 | 848 | 1096 | 228 | 160 | 446 | 491 | 286 | 225 | 230 | 230 |
| | 15 | 80 | 430 | 267 | 375 | - | 347 | - | 248 | 848 | 1096 | 228 | 160 | 446 | 491 | 286 | 225 | 230 | 230 |

B = without shroud

| Pumps | 1450 rpm | kW | DN | A | B | C | øD | E | F | G | K | H | J | I | Y | L | M | N | O |
|-------|----------|-----|-----|-----|-----|-----|----|-----|-----|-----|-----|-----|-----|-----|-----|-----|---|---|---|
| AS 40 | | 1,1 | 40 | 200 | 296 | 100 | 10 | 34 | 141 | 380 | 521 | 90 | 110 | 235 | 125 | 140 | - | - | - |
| | 1,5 | 40 | 200 | 296 | 125 | 10 | 9 | 141 | 380 | 521 | 90 | 110 | 235 | 125 | 140 | - | - | - | - |
| AS 50 | 2,2 | 40 | 250 | 308 | 140 | 12 | 18 | 141 | 416 | 557 | 100 | 110 | 245 | 135 | 160 | - | - | - | - |
| | 2,2 | 50 | 250 | 343 | 140 | 12 | 18 | 175 | 419 | 594 | 100 | 114 | 250 | 136 | 160 | - | - | - | - |
| AS 60 | 4 | 50 | 250 | 351 | 140 | 12 | 18 | 175 | 441 | 616 | 112 | 114 | 262 | 148 | 190 | - | - | - | - |
| | 4 | 65 | 250 | 372 | 140 | 12 | 18 | 211 | 431 | 636 | 112 | 135 | 292 | 157 | 190 | - | - | - | - |
| AS 65 | 5,5 | 65 | 300 | 412 | 140 | 12 | 20 | 211 | 492 | 697 | 132 | 135 | 312 | 177 | 216 | - | - | - | - |
| | 5,5 | 65 | 300 | 412 | 140 | 12 | 20 | 211 | 492 | 697 | 132 | 135 | 312 | 177 | 216 | - | - | - | - |
| AS 80 | 7,5 | 65 | 300 | 412 | 178 | 12 | 20 | 211 | 492 | 697 | 132 | 135 | 312 | 177 | 216 | - | - | - | - |
| | 11 | 80 | 350 | 555 | 210 | 15 | 23 | 248 | 677 | 925 | 160 | 160 | 378 | 218 | 254 | - | - | - | - |
| | 15 | 80 | 350 | 555 | 254 | 15 | 23 | 248 | 677 | 925 | 160 | 160 | 378 | 218 | 254 | - | - | - | - |



A = with shroud * Motor shims on request

| Pumps | 1450 rpm | kW | DN | A | B | C | C1 | E | E1 | F | G | K | H | J | I | I1 | Y | L | L1 |
|-------|----------|-----|-----|-----|-----|-----|-----|-----|-----|-----|-----|-----|-----|-----|-----|-----|-----|-----|-----|
| AS 42 | | 2,2 | 40 | 330 | 226 | - | 301 | - | 183 | 200 | 510 | 710 | 190 | 110 | 335 | 395 | 225 | 225 | - |
| | 3 | 40 | 330 | 226 | - | 301 | - | 183 | 200 | 510 | 710 | 190 | 110 | 335 | 395 | 225 | 225 | - | - |
| AS 52 | 5,5 | 50 | 370 | 258 | 266 | - | 280 | - | 237 | 567 | 804 | 228 | 114 | 378 | 450 | 264 | 225 | 180 | 180 |

B = without shroud

| Pumps | 1450 rpm | kW | DN | A | B | C | øD | E | F | G | K | H | J | I | Y | L | M | N | O |
|-------|----------|-----|-----|-----|-----|-----|----|-----|-----|-----|-----|-----|-----|-----|-----|-----|---|---|---|
| AS 42 | | 2,2 | 40 | 250 | 365 | 140 | 12 | 18 | 200 | 416 | 616 | 100 | 110 | 245 | 135 | 160 | - | - | - |
| | 3 | 40 | 250 | 365 | 140 | 12 | 18 | 200 | 416 | 616 | 100 | 110 | 245 | 135 | 160 | - | - | - | - |
| AS 52 | 5,5 | 50 | 300 | 454 | 140 | 12 | 20 | 237 | 502 | 739 | 132 | 115 | 282 | 168 | 216 | - | - | - | - |



C.S.F. Inox S.p.A. Strada per Bibbiano, 7 - 42027 Montecchio E. (RE) - ITALY EU

Ph +39.0522.869911 r.a. - Fx +39.0522.865454 - italia@csf.it - www.csf.it

Export Department • Commercial Étranger • Comercial Extranjero

Ph +39.0522.869922 - Fx +39.0522.869841 - export@csf.it - www.csf.it



All the instructions, data and representations (in whatever way executed) listed in this publication are indicative and do not bind. C.S.F. does not stand surety or undertake any obligation for the utilisation of this document and for the information contained. In particular, it does not guarantee against omissions or errors of the data and drawings here indicated. Notice that the technical specifications, information and representations in this document are merely indicative and approximate. C.S.F. INOX reserves the right at any moment and without notice to modify the data, drawings and information indicated in this document.