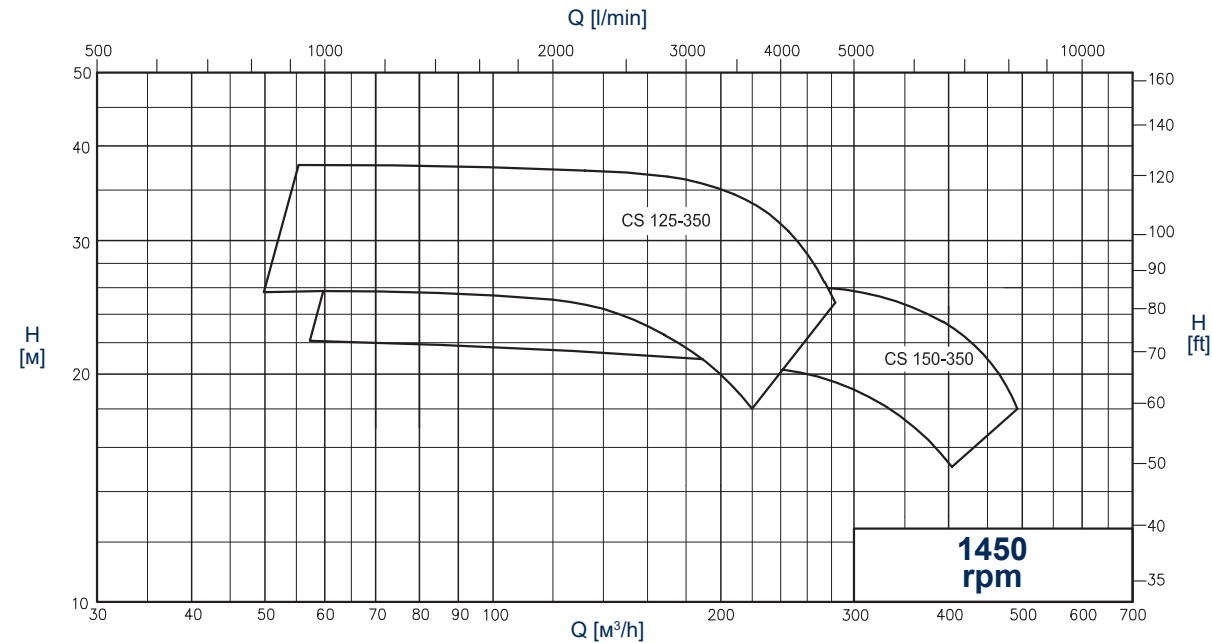
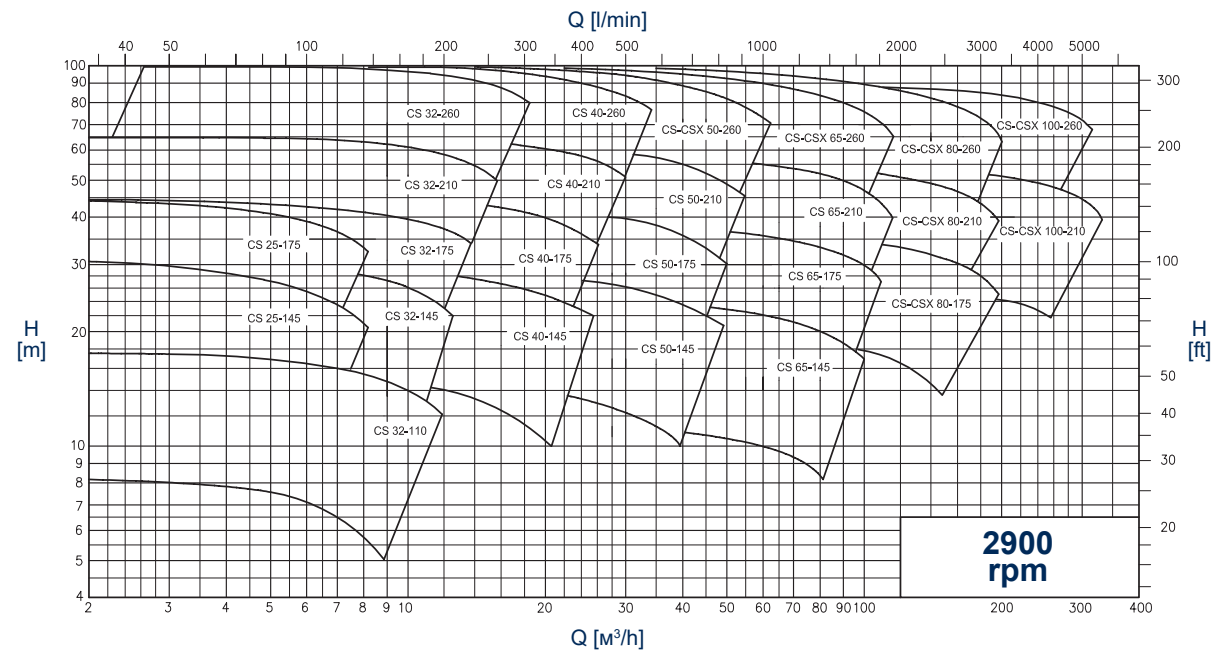
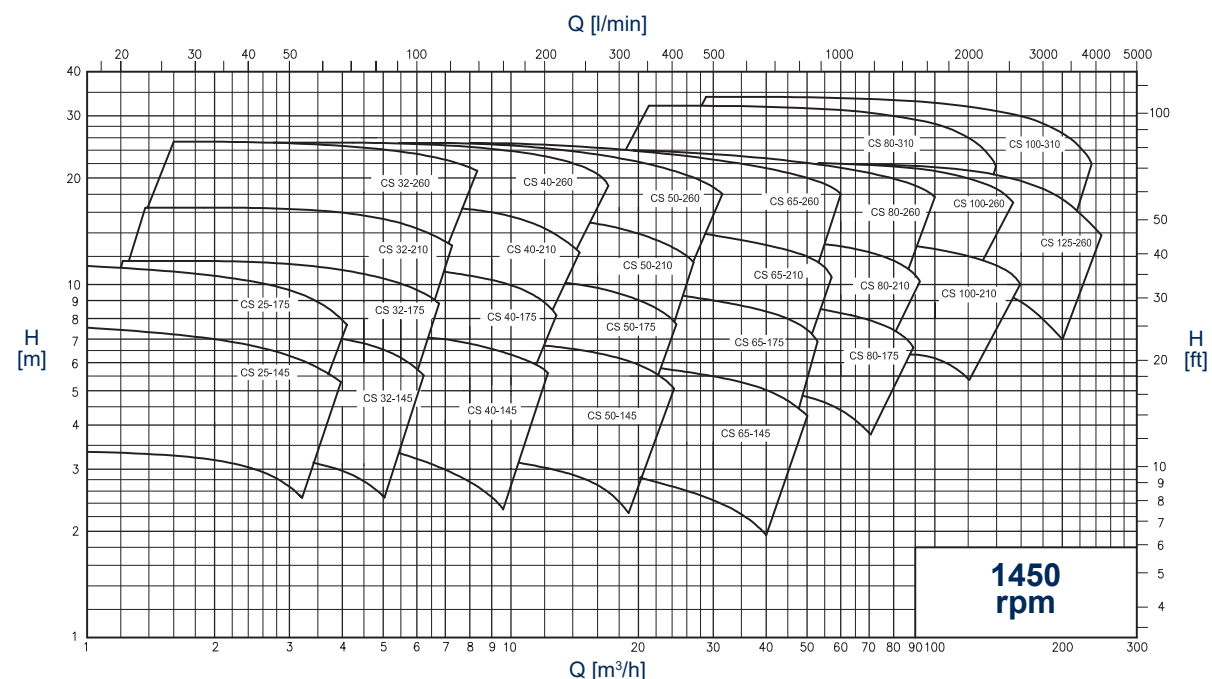
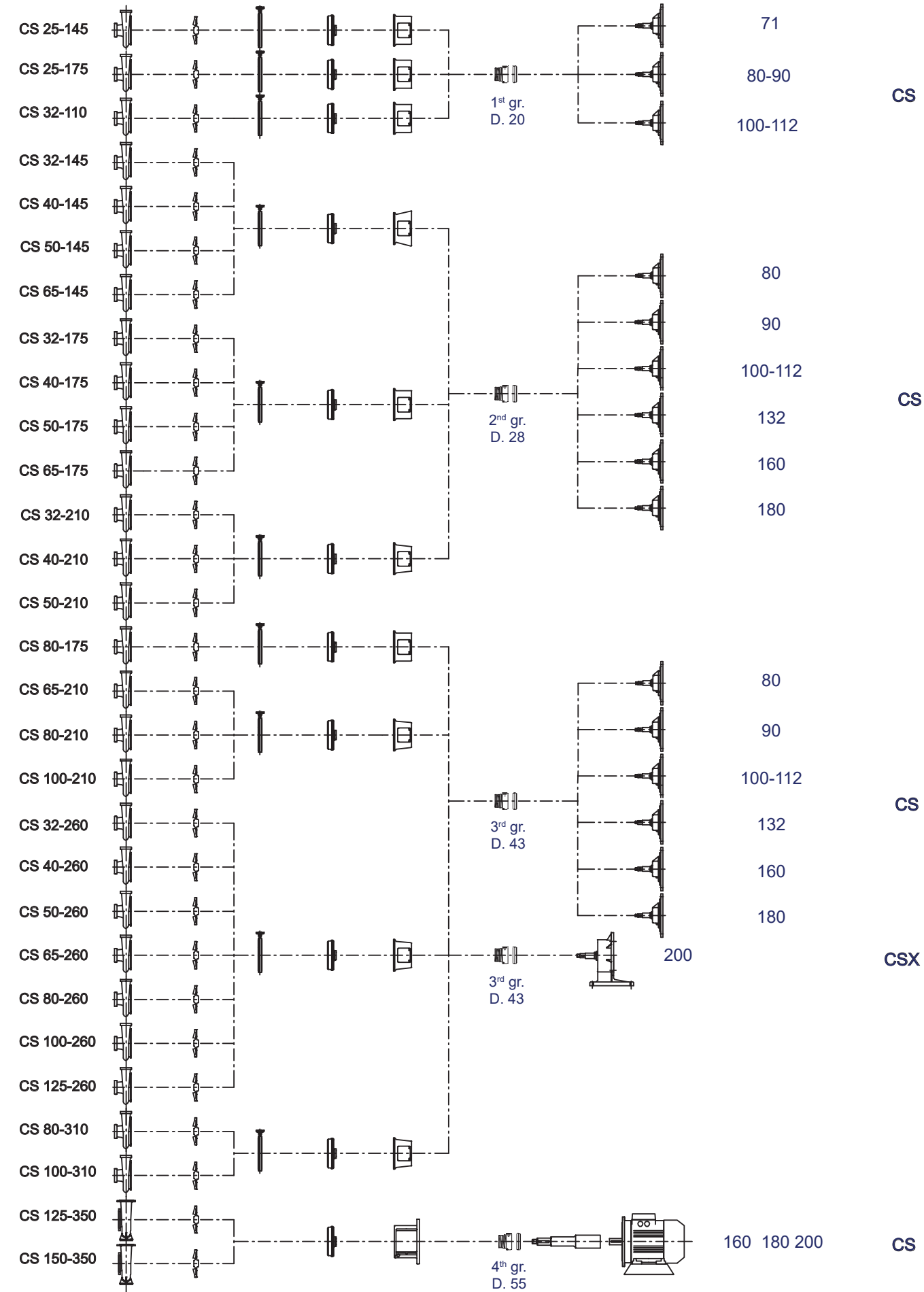


**GENERAL DIAGRAMS**  
(Performance applies to H<sub>2</sub>O at 20 °C, 1013 mbar. Data not binding)



**A wide range of 29 models divided into 4 groups.**



**C.S.F. Inox S.p.A.** Strada per Bibbiano, 7 - 42027 Montecchio E. (RE) - ITALY EU  
 Ph +39.0522.869911 r.a. - Fx +39.0522.865454 - italia@csf.it - www.csf.it  
**Export Department • Commercial Étranger • Comercial Extranjero**  
 Ph +39.0522.869922 - Fx +39.0522.869841 - export@csf.it - www.csf.it



All the instructions, data and representations (in whatever way executed) listed in this publication are indicative and do not bind. C.S.F. does not stand surety or undertake any obligation for the utilisation of this document and for the information contained. In particular, it does not guarantee against omissions or errors of the data and drawings here indicated.  
 Notice that the technical specifications, information and representations in this document are merely indicative and approximate.  
 C.S.F. INOX reserves the right at any moment and without notice to modify the data, drawings and information indicated in this document.

DCATLCSGB 11/02/2026



**CENTRIFUGAL SANITARY PUMPS**  
**CS - CSX series**

Closed coupled hygienic centrifugal pumps with open impellers. CS Series pumps meet the highest requirements of the food, pharmaceutical, chemical and water treatment industries. The pumps are designed to a modular concept, resulting in a large number of models and a massive performance range.

When combined with the extremely robust construction, these highly efficient pumps become ideal for any hygienic process system.

Wetted parts in CF-3M 1.4404 / AISI 316L stainless steel, investment cast and electro-chemically polished. Special internal finishes to 0,5 micron Ra are available on request (not on sizes 125 to 150). The clamp casing and seal design allows quick disassembly for inspection, cleaning and maintenance. It also enables the delivery port to be rotated to any position for easy installation (not on sizes 125 to 150).

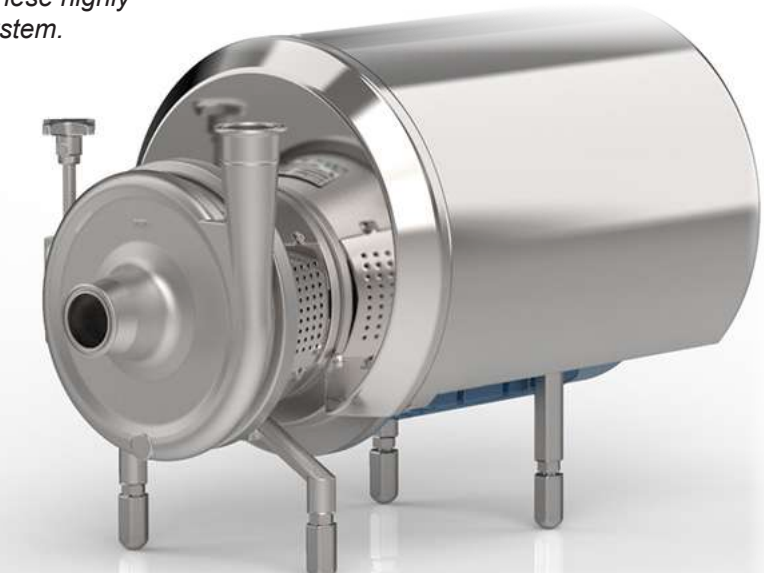
Separate IEC standard motor.

For aggressive products and environments, CS pumps can on special request, be manufactured in the following materials:

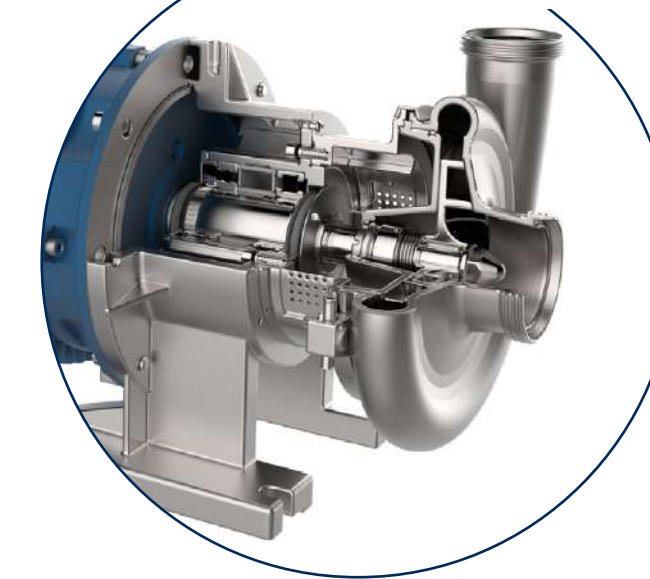
- Superduplex
- Nickel alloy

Note: upon availability with CSF.

**ATEX-compliant versions also available on request.**



CS pump X execution, close coupled centrifugal pumps with separate support frame and grease lubricated bearings, for extremely arduous applications.



Special version equipped with an inducer in the suction port. This device is fitted immediately upstream of the impeller to reduce the NPSH required by the pump.



**TECHNICAL DATA**

Flow rates up to 500 m<sup>3</sup>/h  
 Heads up to 100 m  
 Maximum operating pressure 10 bar up to 100°C  
 Temperature range -20°+ +100°  
 (on request up to 140 °C for water and up to 190°C for food oil, to be specified on purchase order).  
 High performance, with low NPSH values.

**Mechanical seals:**

With seats to EN 12756, ISO 3069 standards.  
 Single internal mechanical seal  
 Single external flushed mechanical seal  
 Double external flushed mechanical seal

**Elastomers (FDA Regulation (EC) No. 1935/2004):**

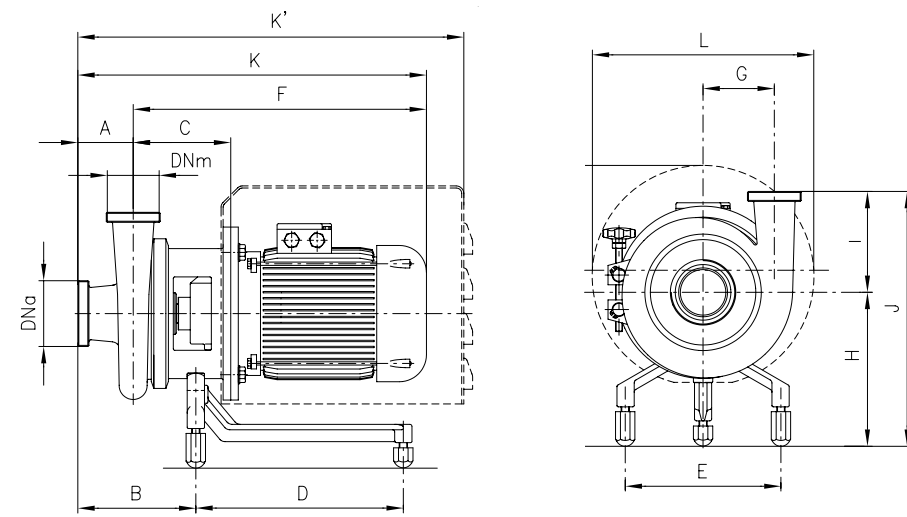
Nitrile (NBR)  
 Ethylene propylene (EPDM)  
 Special fluorocarbon seal  
 Fluorocarbon seal (FPM - FKM)  
 FEP  
 FFPM - FFKM  
 Silicone

**Connections:**

DIN - SMS - IDF - BS / RJT - DS - CLAMP and EN1092-1 PN16 flanges suitable for all international standards.

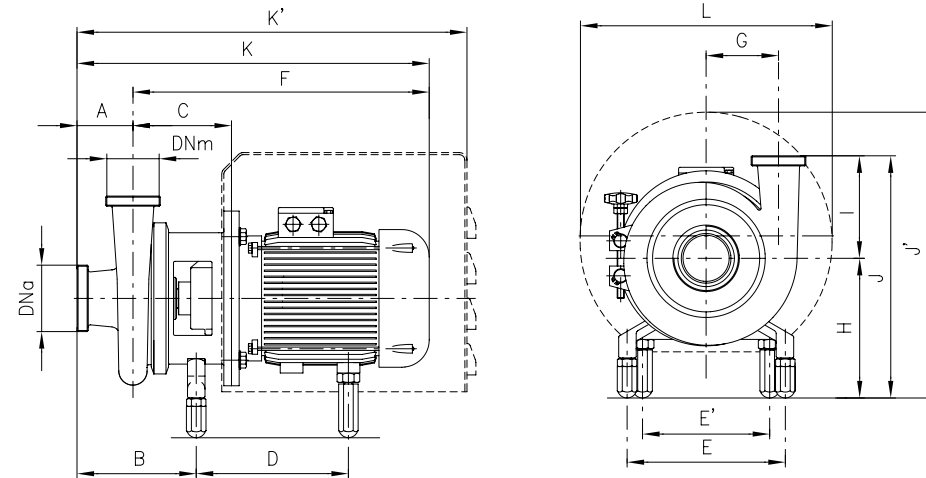
**OVERALL DIMENSIONS**

Dimensions not binding - DN = DIN 11851 male threaded connections with standard IEC/EN motors



Pump type	IEC motor dimensions:	DNa	DNm	A	B	C	D	E	F	G	H	K	K'	I	J	J'	L			
CS 25-145	71	32	25	75	144	117	190	178	335	81	158	410	532	145	303	300	239			
	80					123			359			434	541					340	298	
	90					123			403			478	522					306	239	
CS 25-175	71	32	25	65	134	117	190	178	335	96	164	424	531	149	313	346	298			
	80					123			359			468	531					359	353	330
	90					138			403			519	619					359	353	330
CS 32-110	71	40	32	70	137	117	190	178	335	65	149	405	527	110	259	291	239			
	80					123			359			473	536					331	298	
	90					123			403			536	536					331	298	
CS 32-145	71	40	32	80	167	117	231	225	374	85	208	454	566	145	353	372	298			
	80					138			418			498	566					353	372	298
	90					139			455			535	566					370	430	330
CS 32-175	71	40	32	80	167	117	231	225	374	95	213	455	567	150	363	385	298			
	80					139			419			499	567					363	385	298
	90					140			456			536	567					380	435	330
CS 32-210	71	40	32	80	158	117	231	225	375	110	221	455	567	165	386	385	298			
	80					139			419			499	567					386	385	298
	90					140			456			536	567					403	443	330
CS 32-260	71	50	32	90	184	117	231	225	375	140	221	455	601	172	393	385	298			
	80					163			443			533	601					393	385	298
	90					164			480			570	670					410	443	330
CS 40-145	71	50	40	80	168	117	231	225	375	90	208	455	567	133	341	372	298			
	80					139			418			498	567					341	372	298
	90					140			455			535	567					358	430	330
CS 40-175	71	50	40	80	169	117	231	225	377	95	213	457	569	150	363	377	298			
	80					141			421			501	569					363	377	298
	90					142			458			550	569					380	435	330
CS 40-210	71	50	40	80	161	117	231	225	377	115	221	457	569	165	386	385	298			
	80					141			421			501	569					386	385	298
	90					142			458			550	569					380	435	330

Pump type	IEC motor dimensions:	DNa	DNm	A	B	C	D	E	F	G	H	K	K'	I	J	J'	L			
CS 40-260	90	50	40	100	194	163	231	225	443	145	221	543	611	172	393	385	298			
	100					164	301		480			592	680					410	443	330
	112					164	301		492			592	680					410	443	330
CS 50-145	80	65	50	80	170	141	231	225	377	95	208	457	569	145	353	372	298			
	90					142	301		421			501	569					370	430	330
	100					142	301		458			550	569					370	430	330
CS 50-175	80	65	50	80	169	141	231	225	377	100	213	457	569	150	363	377	298			
	90					142	301		421			501	569					380	435	330
	100					142	301		458			550	569					380	435	330
CS 50-210	80	65	50	80	161	141	231	225	377	120	221	457	569	165	402	443	330			
	90					142	301		421			501	569					402	443	330
	100					142	301		458			550	569					402	443	330
CS 50-260	80	65	50	90	185	165	301	225	481	145	238	571	671	175	413	443	330			
	90					165	301		493			583	671					413	443	330
	100					165	301		493			583	671					413	443	330
CS 65-145	80	80	65	79	173	145	231	225	381	112	208	460	572	145	353	372	298			
	90					145	231		425			504	572					353	372	298
	100					146	301		462			541	642					370	430	330
CS 65-175	80	80	65	80	172	144	231	225	424	120	213	504	572	150	363	377	298			
	90					145	301		461			553	641					380	435	330
	100					145	301		473			553	641					380	435	330
CS 65-210	80	80	65	90	189	168	231	225	448	135	221	538	605	165	386	385	298			
	90					169	301		485			575	675					403	443	330
	100					169	301		497			587	675					403	443	330
CS 65-260	80	80	65	100	198	168	301	225	484	155	238	584	684	205	443	443	330			
	90					168	301		496			596	684					443	443	330
	100					168	301		496			596	684					443	443	330
CS 80-175	80	100	80	100	204	174	301	225	487	139	230	587	690	164	394	435	330			
	90					174	301		499			602	690					394	435	330
	100					174	301		499			602	690					394	435	330
CS 80-210	80	100	80	100	201	171	301	225	487	145	238	587	687	165	403	443	330			
	90					171	301		499			599	687					403	443	330
	100					171	301		499			599	687					403	443	330
CS 80-260	80	100	80	100	201	171	301	225	487	165	238	587	687	209	447	443	330			
	90					171	301		499			599	687					447	443	330
	100					171	301		499			599	687					447	443	330



Pump type	IEC motor dimensions:	DNa	DNm	A	B	C	D	E	F	G	H	K	K'	I	J	J'	L							
CS 32-210	132 S	40	32	80	158	161	272.7	225	198	110	238	651	735	165	403	460	370							
	132 M					206	310.7		254			733	813					907	546	478				
	160					206	446		254			733	813					907	546	478				
CS 32-260	132 S	50	32	90	184	185	319.7	225	198	140	238	685	769	172	410	460	370							
	132 M					225	450		254			752	842					940	419	555	478			
	160					225	450		254			752	842					940	419	555	478			
CS 40-145	132 S	50	40	80	169	164	263	225	198	95	230	654	742	150	380	452	370							
	132 M					169	265		198			574	95					230	654	738	150	380	460	370
	160					161	303		254			735	115					238	815	909	165	403	546	478
CS 40-210	132 S	50	40	80	161	164	272.7	225	198	115	238	654	738	165	403	460	370							
	132 M					164	310.7		254			735	815					909	546	478				
	160					164	446		254			735	815					909	546	478				
CS 40-260	132 S	50	40	100	194	185	281.7	225	198	145	238	695	779	172	410	460	370							
	132 M					185	319.7		254			752	852					950	419	555	478			
	160					185	494		254			752	852					950	419	555	478			
CS 50-145	132 S	65	50	80	170	164	263	225	198	95	225	654	738	145	370	447	370							
	132 M					164	265		198			574	95					230	654	738	150	380	452	370
	160					164	303		254			735	100					230	815	909	150	380	538	478
CS 50-175	132 S	65	50	80	169	164	265	225	198	100	230	654	738	150	380	435	330							
	132 M					164	265		198			574	95					230	654	738	150	380	538	478
	160					164	303</																	