



## CENTRIFUGAL PUMPS CN series

*Closed coupled single-stage centrifugal pumps. A range of 6 models with open impellers, independent shafts and IEC standard motors.*

*Optimised design to ensure high levels of hygiene - The absence of product hold-up and no dead-legs ensures efficient cleaning by standard CIP methods and effective sterilisation by SIP.*

*Wetted parts are in pressed polished plate and investment cast electropolished CF3M 1.4409 / AISI 316L (1.4404) stainless steel. Investment cast and electro-chemical polishing. Internal finishes of 0,5 micron Ra are available on request.*

**ATEX-compliant versions also available on request.**



### Applications

*Food processing, dairy, beverage, chemical, cosmetics and pharmaceutical industries. The open impeller allows a large range of products such as purified water, juices, creams, ice-cream mix, milk, wine, spirits, whey and WFI to be safely transferred.*



Pump without shroud and stainless steel motor shims.



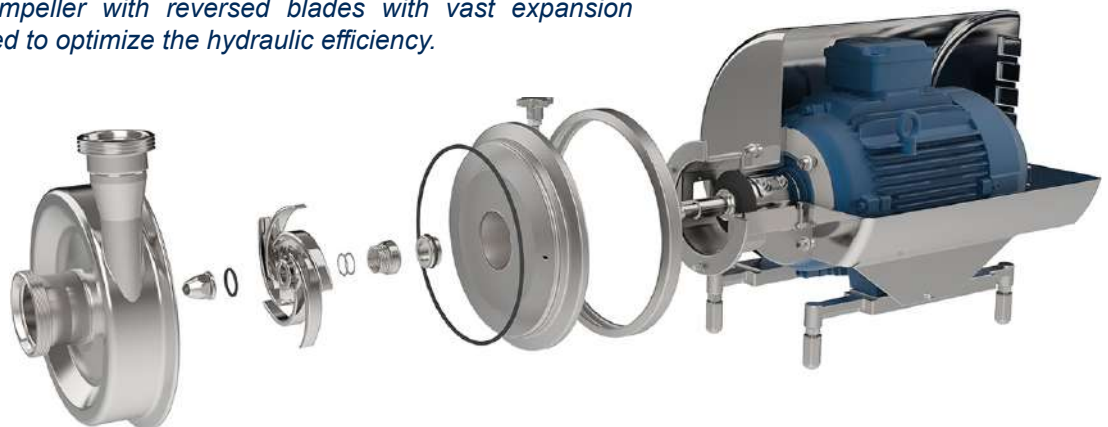
*All stainless construction, with standard motor, separate pump shaft with clamp coupling, internal product seal and an open impeller.*

*The clamp casing and seal design allow quick disassembly for inspection, cleaning and maintenance. It also enables the delivery port to be rotated to any position for easy installation and drainage.*

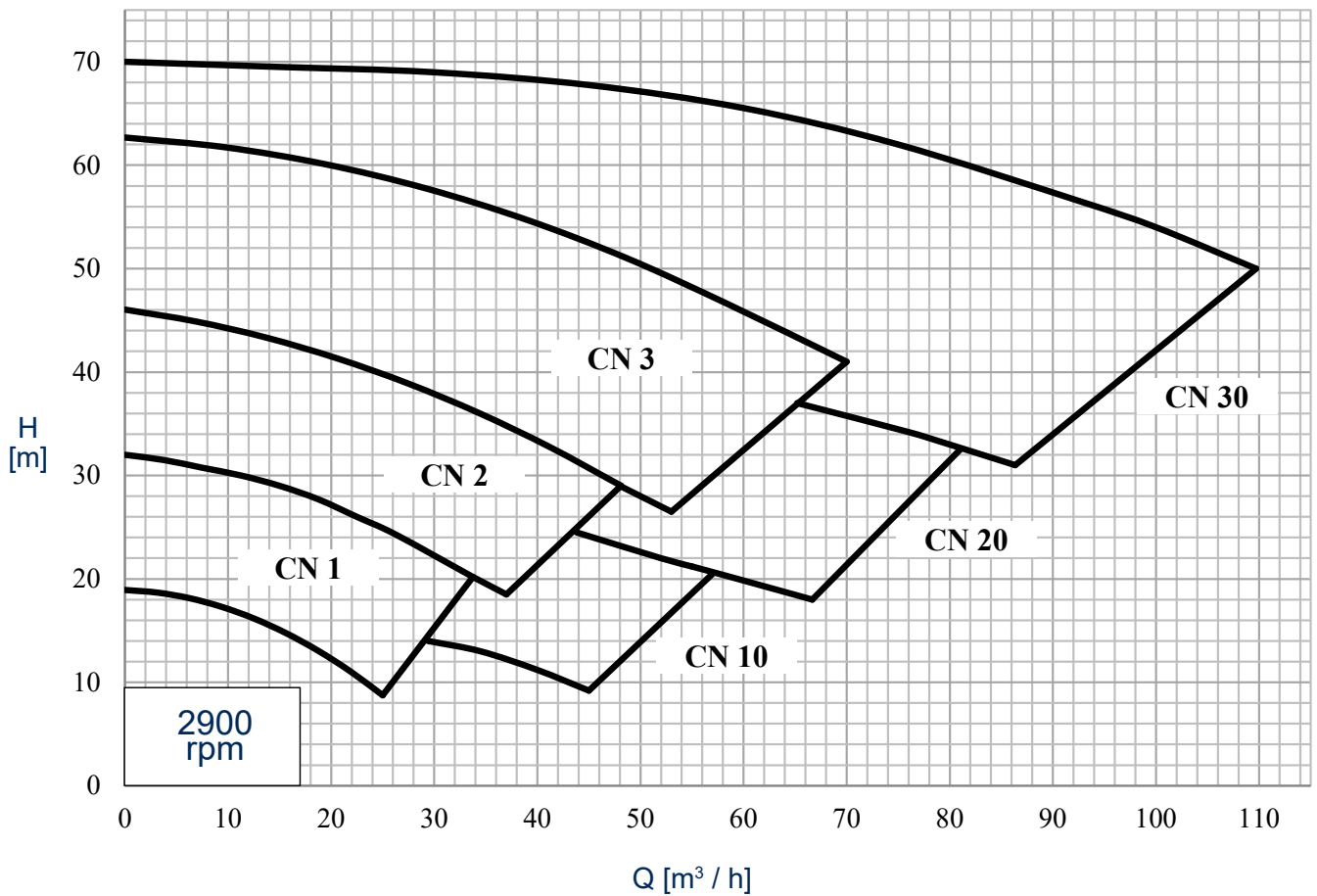
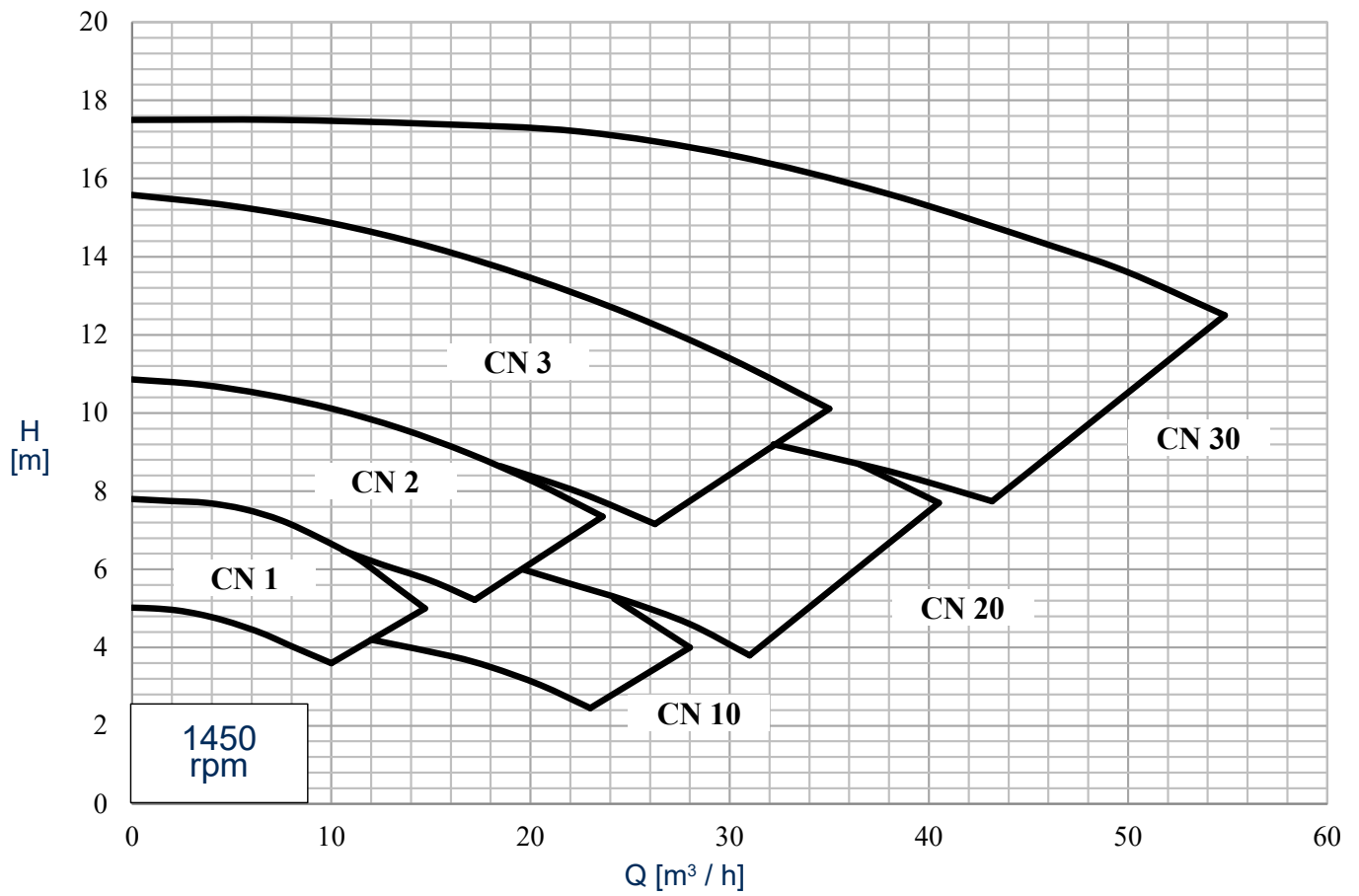
*Motor shroud.*



*Open impeller with reversed blades with vast expansion designed to optimize the hydraulic efficiency.*



**GENERAL DIAGRAMS CN series**  
(Performance applies to H<sub>2</sub>O at 20 °C, 1013 mbar, Data not binding)



## TECHNICAL DATA CN series

Flow rates up to 110 m<sup>3</sup>/h  
Heads up to 70 m  
Maximum operating pressure 10 bar up to 100°C  
Temperature range -10°C ÷ +121°C  
High performance, with low NPSH values.

### Mechanical seals:

With seats to EN 12756, ISO 3069 standards.

### Connections:

DIN - SMS - IDF - BS / RJT - DS - CLAMP and EN1092-1 PN16 flanges suitable for all international standards.

### Elastomers (FDA Regulation (EC) No. 1935/2004):

Ethylene propylene (EPDM)  
Special fluorocarbon seal  
Fluorocarbon seal (FPM - FKM)  
FFPM - FFKM

## AUTOMATION ACCESSORIES

### Pump with integrated inverter and pressure sensor



Compact and functional application which includes a pressure sensor installed on the pump delivery so as to modulate its speed according to the pressure value detected.

The sensor is powered directly by the inverter and communicates with it via an analog signal. This allows a continuous modulation of the pump speed when the pressure detected at the delivery is within the range set on the sensor. Below the minimum pressure, the pump speed is not modulated, while once the maximum pressure is reached, the pump stops.

The pressure sensor can be parameterized through the IO-LINK® communication protocol with a specific interface and a dedicated software. The interface is available upon specific request.

### Pump with integrated inverter and flow meter

Electromagnetic flow meter for conductive liquids. It is able to measure the instantaneous flow rate and temperature of the fluid and also acts as a liter counter (totalizer).

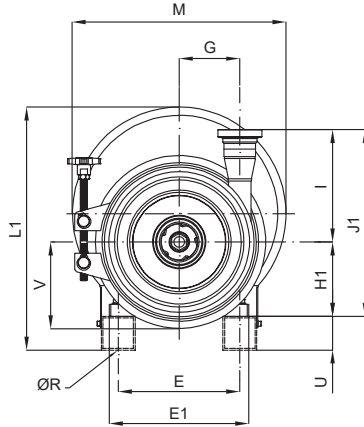
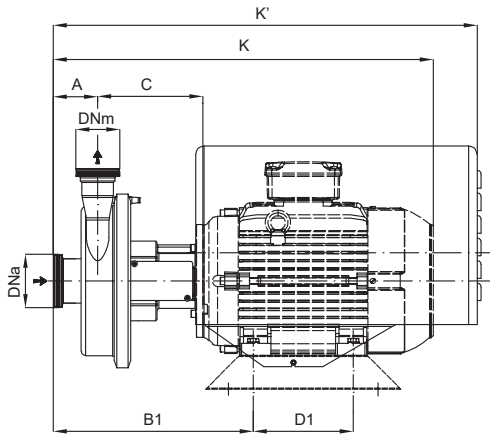
Thanks to the instrument's ability to generate digital, analog and pulse output signals, it allows integration into a wide variety of automations. It is possible to modulate the pump speed according to the set flow rate value, program automated filling cycles and communicate with PLC or inverter.

The flow meter features an IO-LINK® communication interface for direct access to process and diagnostic data and Bluetooth® connection via App.

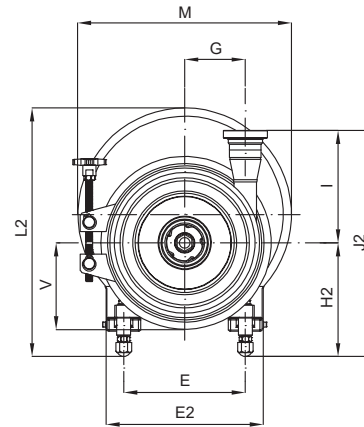
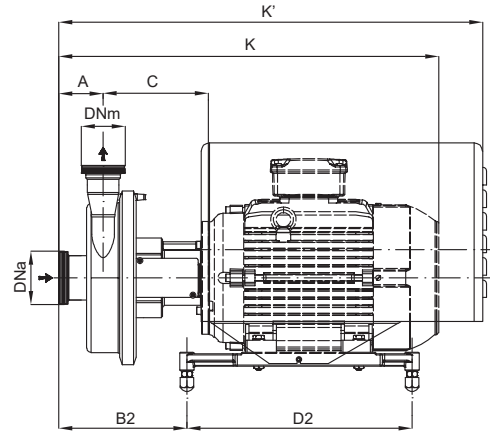


## OVERALL DIMENSIONS CN series

Dimensions not binding - DN = DIN 11851 male threaded connections with standard IEC/EN motors



**MOTOR "B3-B14"  
EXEC. WITH SHIMS**



**MOTOR "B3-B14"  
EXEC. WITH ADJUSTABLE FEET**

Pumps	IEC motors	DNa	DNm	A	B1	B2	C	D1	D2	E	E1	E2	G	H1	H2	K	K'	ØR	I	J1	J2	L1	L2	M	U	V			
CN 1	80	50	40	73	276	186	155	100	220	125	155	160	86	80	158	462	-	10	183	263	341	-	-	-	40	127			
	90				282	210		125	270	140	165	210		90	160	505,5	597			283	353	389,5	409,5	369			50		
	100				319	247		140	285	160	196	240		100	170	572	-			295	365	401,5	421,5	380			60		
	112				326	239		185	178	400	216	256		276	112	182	592			744	315	385	432	442			380	60	
	132				345	218			100	220	125	155		160	132	202	666			744	280	358	-	-			-	40	
CN 2	80	65	50	79	286	196	159	100	220	125	155	160	108	80	158	478	-	10	200	290	360	317,5	347,5	303	369	50	154		
	90				292	219		125	270	140	165	210		90	160	515	607			300	370	389,5	432,5	380				60	
	100				129	257		140	285	160	196	240		100	170	582	684			312	382	401,5	444,5	380				60	
	112				336	249		189	178	400	216	256		276	112	182	600			688	332	402	432	442				380	60
	132				355	228			100	220	125	155		160	132	202	675			754	360	410	536,5	526,5				473	70
	160				404	251		219	254	475	254	300		326	160	210	821			912	315	415	317,5	378,5				303	40
CN 3	90	80	65	81	295	223	159	125	270	140	165	210	129	90	160	521	611	10	255	315	415	317,5	378,5	303	369	50	179		
	100				332	260		140	285	160	196	240		100	170	587	688			355	425	389,5	440,5	380				60	
	112				339	252		189	178	400	216	256		276	112	182	606			758	367	437	401,5	452,5				380	60
	132				358	231			100	220	125	155		160	132	202	678			758	387	457	432	473				380	60
	160				407	217,5		219	254	475	254	300		326	160	210	823			793	415	465	536,5	536,5				473	70
CN 10	80	65	50	79	287	197	155	100	220	125	155	160	80	80	158	474	-	10	180	260	338	-	-	-	369	50	127		
	90				286	215		125	270	140	165	210		90	160	517	608			270	340	317,5	347,5	303				40	
	100				320	252		185	140	285	160	196		240	100	170	583			686	280	350	389,5	409,5				380	60
	112				237	244			178	400	216	256		276	112	182	601			756	292	362	401,5	421,5				380	60
	132				346	224		215	178	400	216	256		276	132	202	676			756	312	382	432	442				380	60
	160				405	252			254	475	254	300		326	160	210	821			912	340	390	536,5	340				473	70
CN 20	80	80	65	84	299	299	145	100	220	125	155	160	98	80	158	485	606	10	218	298	376	-	-	-	369	50	154		
	90				305	305		125	270	140	165	210		90	160	521	619			308	378	317,5	347,5	303				40	
	100				341	269		175	140	285	160	196		240	100	170	594			695	318	388	355	432,5				380	60
	112				348	261			178	400	216	256		276	112	182	612			765	330	400	401,5	444,5				380	60
	132				367	240		205	178	400	216	256		276	132	202	687			765	350	420	432	442				380	60
	160				416	263			254	475	254	300		326	160	210	832			923	378	428	546,5	526,5				473	70
	180				449	198		225	279	600	282,5	350		354,5	180	240	912			-	398	458	-	-				-	60
CN 30	90	100	80	88	310	238	177	125	270	140	165	210	127	90	160	534	624	10	273	363	433	317,5	378,5	303	369	50	179		
	100				347	275		140	285	160	196	240		100	170	600	701			373	443	389,5	440,5	380				60	
	112				354	267		178	178	400	216	256		276	112	182	618			771	385	455	401,5	452,5				380	60
	132				273	246			100	220	125	155		160	132	202	693			771	405	475	432	473				380	60
	160				423	269		207	254	475	254	300		326	160	210	800			929	433	483	546,5	536,5				473	70
	180				452	201		227	279	600	282,5	350		354,5	180	240	918			-	453	513	-	-				-	60



**C.S.F. Inox S.p.A.** Strada per Bibbiano, 7 - 42027 Montecchio E. (RE) - ITALY EU

Ph +39.0522.869911 r.a. - Fx +39.0522.865454 - italia@csf.it - www.csf.it

**Export Department • Commercial Étranger • Comercial Extranjero**

Ph +39.0522.869922 - Fx +39.0522.869841 - export@csf.it - www.csf.it



All the instructions, data and representations (in whatever way executed) listed in this publication are indicative and do not binding. C.S.F. does not stand surety or undertake any obligation for the utilisation of this document and for the information contained. In particular, it does not guarantee against omissions or errors of the data and drawings here indicated. Notice that the technical specifications, information and representations in this document are merely indicative and approximate. C.S.F. INOX reserves the right at any moment and without notice to modify the data, drawings and information indicated in this document.