



INVERTERS AND AUTOMATIC CONTROL SYSTEMS

C.S.F. Inox can supply inverters and automatic control systems for integration with its pumps. These systems are available for both positive-displacement pumps (Mono, TS, SN, Lobe), and centrifugal and self-priming pumps. Designed for power ratings of up to 22 kW (higher power ratings available on request).

QLS - INVERTER LS S100



The standard LS S100 inverter comes complete with: main power switch, emergency stop button, rotation direction selector, potentiometer for adjusting the operating frequency, and local/remote selector for controlling the pump with an external 4-20 mA analogue signal (4-pin Harting socket on the side of the inverter). There is also a display showing the frequency and parameter settings.

N.B.: Thanks to its IP66 protection rating, the inverter can be washed with jets of water.



Optional extras available:

- Pump priming selector, if a flow switch is installed on pump suction;
- 6-channel remote control for Start/Stop, rotation direction reversal, and frequency adjustment functions;
- Safety pressure sensor to prevent over-pressure in the system.

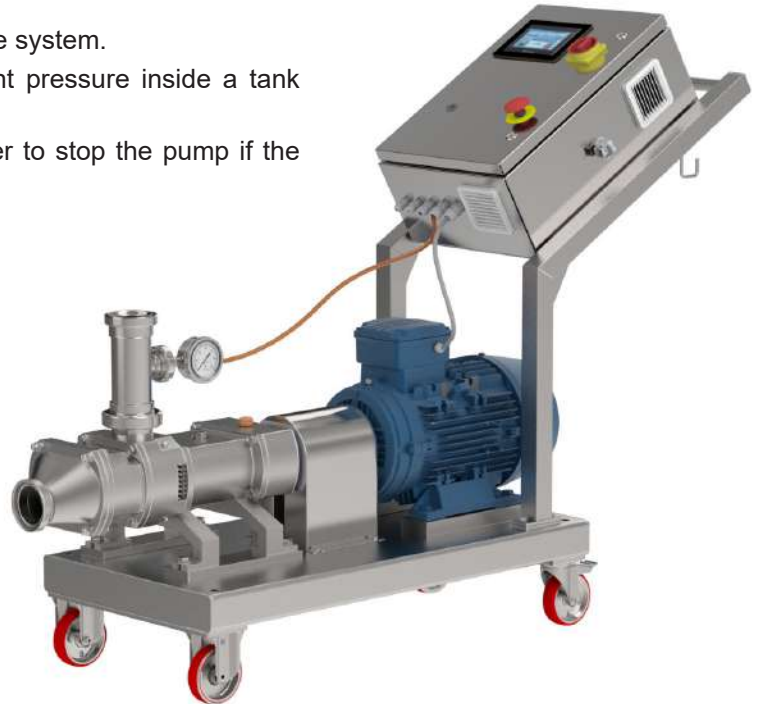


QTW - ELECTRICAL PANEL IN STAINLESS STEEL HOUSING WITH HMI PANEL

Electrical panel in stainless steel housing complete with Toshiba inverter and HMI panel. The operator panel can be used to control pump operation, set the inverter parameters, and see the rotation speed, absorbed current, operating hours, and number of starts.

Optional extras available:

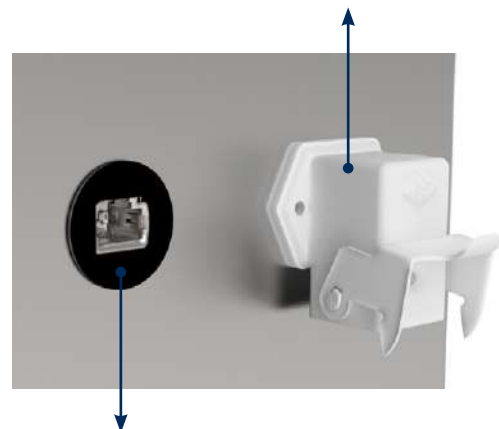
- Flow switch to prevent dry running of the pump.
- Safety pressure sensor to prevent overpressure in the system.
- PI (proportional-integral) control to maintain constant pressure inside a tank (e.g. isobaric fillers);
- PT100 temperature probe with temperature controller to stop the pump if the temperature limit is exceeded;
- Remote assistance service (EasyAccess2.0).



7" touchscreen

- √ Intuitive reading and control of functions;
- √ Access to and acquisition of more detailed information;
- √ Data storage for predictive maintenance.

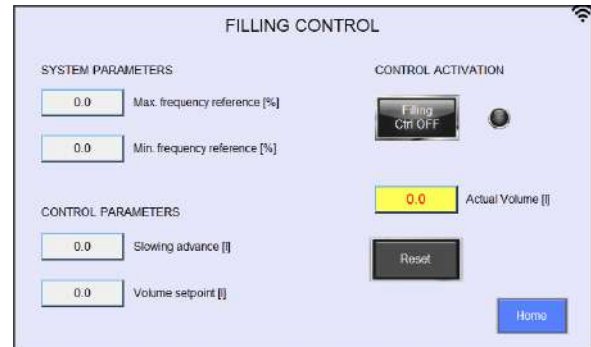
4-pin Harting socket for controlling pump operation via a remote analogue (4-20 mA) or digital (ON-OFF) signal.



The panel can be connected to an Ethernet network via an external RJ45 port.

QNW - DECENTRALIZED NORD INVERTER WITH STAINLESS STEEL PANEL AND HMI

This setup features a Nord inverter integrated into an electric motor. The pump is controlled via the HMI panel installed on the stainless steel housing. The inverter is equipped with an internal PLC which, together with the sensors, manages the automatic control system.



HMI panel page dedicated to filling cycles

The automatic controls available are:

- Pressure control: to keep the pump's operating pressure constant even when system conditions vary (e.g. isobaric fillers);
- Flow control: to keep the flow rate delivered by the pump constant even when system conditions vary;
- Filling cycles: to execute repeat fillings of a set volume of product.

N.B. : The controls can only be used individually.

N.B. : The safety function that stops the pump if the maximum pressure is reached is always active.

The panel features a 4-pin Harting socket for managing both an analogue (4-20 mA) and digital (ON-OFF) remote signal. Furthermore, the panel can be connected to an Ethernet network via an external RJ45 port.

Optional extras available:

- Remote assistance service (EasyAccess2.0).

BASIC VERSION

This setup includes:

- Rotation direction selector
- Potentiometer installed directly on the inverter.

Optional:

- Safety pressure switch



SENSORS

All the sensors used in the automatic control systems are integrated with a communication protocol that allows them to be configured from a PC using a dedicated interface and the manufacturer's free software.



LMT SERIES IFM FLOW SWITCH for dry-running protection



PM SERIES IFM PRESSURE SENSOR used for pressure control in PI (proportional-integral) regulation



ENDRESS+HAUSER PICOMAG FLOW METER/TOTALIZER used for flow control with PI (proportional-integral) regulation or as a flow meter in filling cycles. Can also be configured using a free Bluetooth® app.

PG SERIES IFM PRESSURE SENSOR used as a safety system to prevent overpressure in the system.



ULTRASONIC LEVEL SENSOR used to control the flow rate delivered by the pump based on the product level in the tanks or hoppers.



C.S.F. Inox S.p.A. Strada per Bibbiano, 7 - 42027 Montecchio E. (RE) - ITALY EU

Ph +39.0522.869911 r.a. - Fx +39.0522.865454 - italia@csf.it - www.csf.it

Export Department • Commercial Étranger • Comercial Extranjero

Ph +39.0522.869922 - Fx +39.0522.869841 - export@csf.it - www.csf.it



All indications, data and figures (in any form) shown in this publication are indicative and not binding. C.S.F. INOX does not assume any guarantee or obligation for the use of this document nor for the information contained herein. In particular, it does not guarantee against omissions or errors in the data and drawings provided. Please note that the technical data, information and images provided in this document are of a purely indicative and approximate nature. C.S.F. INOX reserves the right, at any time and without prior notice, to modify the data, drawings and information provided in this document.